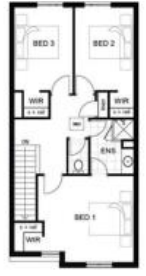


Leased

334 Egerton Dr, Aveley

334



## UNDER MULTIPLE APPLICATION'S from 1st Home Open - SIMILAR PROPERTIES URGENTLY REQUIRED

Step up to two-storey living with this near new home!

This stunning four bedroom, two bathroom, two storey home is located in the heart of Vale in Aveley.

This home is located across the road from the newly completed Millhouse Road Park complete with large grassed areas, gazebo and retained natural bushland. There's also the added benefit of a second shopping precinct adjacent from the home including a Woolworths and a range of boutique stores.

This home features:

- 4 bedrooms (optional bedroom on ground floor) 2 bathrooms
- Spacious open plan living on ground floor
- Rear outdoor space
- Modern kitchen with neutral colour scheme, stainless steel appliances and stone benchtops
- Split system air-conditioning to living and main bedroom

Property available now

🛏️ 4 🚿 2 🚶 2

<b>Price</b>	\$500 a week
<b>Property Type</b>	Rental
<b>Property ID</b>	105

### Agent Details

Jo Johnston - 0450 321 884

### Office Details

VUE Realty  
0450 321 884

**VUE**  
REALTY

Please email [pm@vue-realty.com](mailto:pm@vue-realty.com) to enquire

All applications to be online through [realestate.com](https://realestate.com)

The above information provided has been furnished to us by the vendor/s. We have not verified whether or not that information is accurate and do not have any belief in one way or the other in its accuracy. We do not accept any responsibility to any person for its accuracy and do no more than pass it on. All interested parties should make and rely upon their own inquiries in order to determine whether or not this information is in fact accurate.